

# And what about the Tram operator ??

Welcome Aboard Group's other local enterprises

Welcome Aboard - Visit our other Christchurch attractions!



**gondola**  
CHRISTCHURCH

**punting**  
ON THE AVON

CHRISTCHURCH  
**grand tour**  
GONDOLA | PUNTING | TRAM | NIGHTSIGHTING

Experience our Hanmer Springs activities!

**ThrillSeekers**  
**ADVENTURES**  
HANMER SPRINGS  
LIFT YOUR SPIRIT.

**jet boat**

**bungy**

**rafting**

**quad bikes**

**BOOK NOW**

## + Caterpillar Garden Tours (from April 2012)



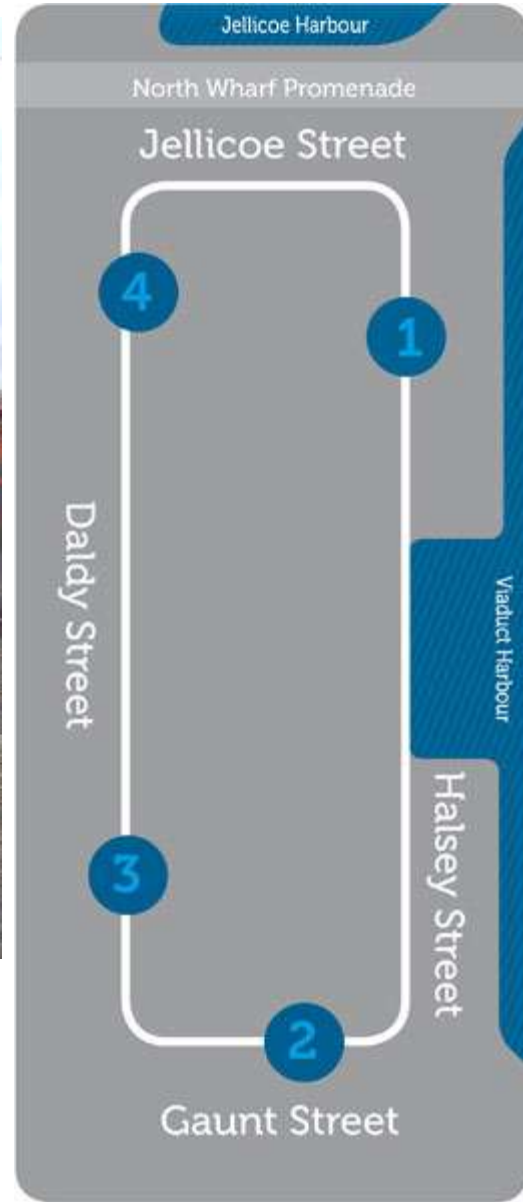


With surplus vehicles stored in the tram shed!

# ...and meanwhile in Auckland (Welcome Aboard Group - Auckland Tramway Ltd)



Dockline tramway opened on Aug 6 2011





Temporary tram shed with hoist rather than pit



And a very recent addition – wheel chair ramp in tram shed



THE  
 THE  
 ARE?  
 112



**ARAB  
 SPRING?**  
 SOCIAL NETWORKING  
 IN FACELESS WORLD  
 THIS BOOK LIFTOUT



CHURCH RECOVERY



# Trams back on track by Christmas?

By Simon Willmet and Alan Wood

Christchurch's tram loop is set to be up and running by the end of the year if major bottling does not prove an insurmountable obstacle to its plan.

The reopening of the loop will be a major boost to the city, but the installation of two pedestrian crossings at the Victoria Square and the Porters Arms (Powers) crossings is likely to be a major hurdle.



Waiting for the tram at the Victoria Square crossing. The tram is expected to be back on the tracks by Christmas.

Work on the tram loop is set to be completed by the end of the year. The tram loop is set to be completed by the end of the year.

WATCH THE TRAM  
[www.press.co.nz](http://www.press.co.nz)

The tram loop is set to be completed by the end of the year. The tram loop is set to be completed by the end of the year.

The tram loop is set to be completed by the end of the year. The tram loop is set to be completed by the end of the year.

The tram loop is set to be completed by the end of the year. The tram loop is set to be completed by the end of the year.

Back in ChCh a desire by CTL for tram loop to be re-opened by next summer

# The issues

- **Repairs to track and Armagh St bridge** - *damage reports completed*
- **Overhead restoration** - *report completed - 40 + new poles needed (building attachments gone)*
- **Tram shed to be fixed** - *condition report due*
- **Major demolitions and other track obstructions** - *e.g. Clarendon, PWC, Cathedral*
- **Trams to be repaired/refurbished** - *now under way at Ferrymead- work for HTT*
- **Public opinion?** - *generally muted – only one recent letter to editor in Press, but on line blogs more evenly split*
- **Likely demand/justification for early reinstatement** - *desire to get tourism going, need to rebuild the business*
- **Council commitment?** – *support of Mayor – but Annual Plan decision seeks more info.*
- **CERA/CCDU approval** - *existing loop does not appear to be an issue, other than timing, but July 30<sup>th</sup> “blueprint” silent on tramway - transport blueprint due in Nov.*

# Central city plan

# Some Key Milestones

- March 2011 – CER Act passed – includes requirement for central city recovery plan
- May 2011 “Share an Idea” CCC run community participation weekend about the central city - 106,000 “ideas”
- August 2011 - Draft central city plan published by CCC
- September 2011 - CCC hearings on draft
- 21 Dec 2011 – Revised CCC draft to Minister of Earthquake Recovery
- March 2012 Minister announces partial acceptance of plan (transport matters on hold, and setting up fo CCDU to report back in 100 days with “blueprint” to be led by Warwick Issacs (in charge of demolitions)
- 30 July 2012 - blueprint (CC Recovery Plan) announced – most of transport (inc tram) excluded
- November 2012 - transport blueprint to be announced

share  
an idea  
[shareanidea.org.nz](http://shareanidea.org.nz)

“Fully integrated, multimodal  
transport system  
which offers choices of  
travel mode.”

*Share an Idea, Community Expo*

issues of the newsletter please  
include them.





Draft central city plan (Aug. 2011) – strong support for light rail

# Transport Choice

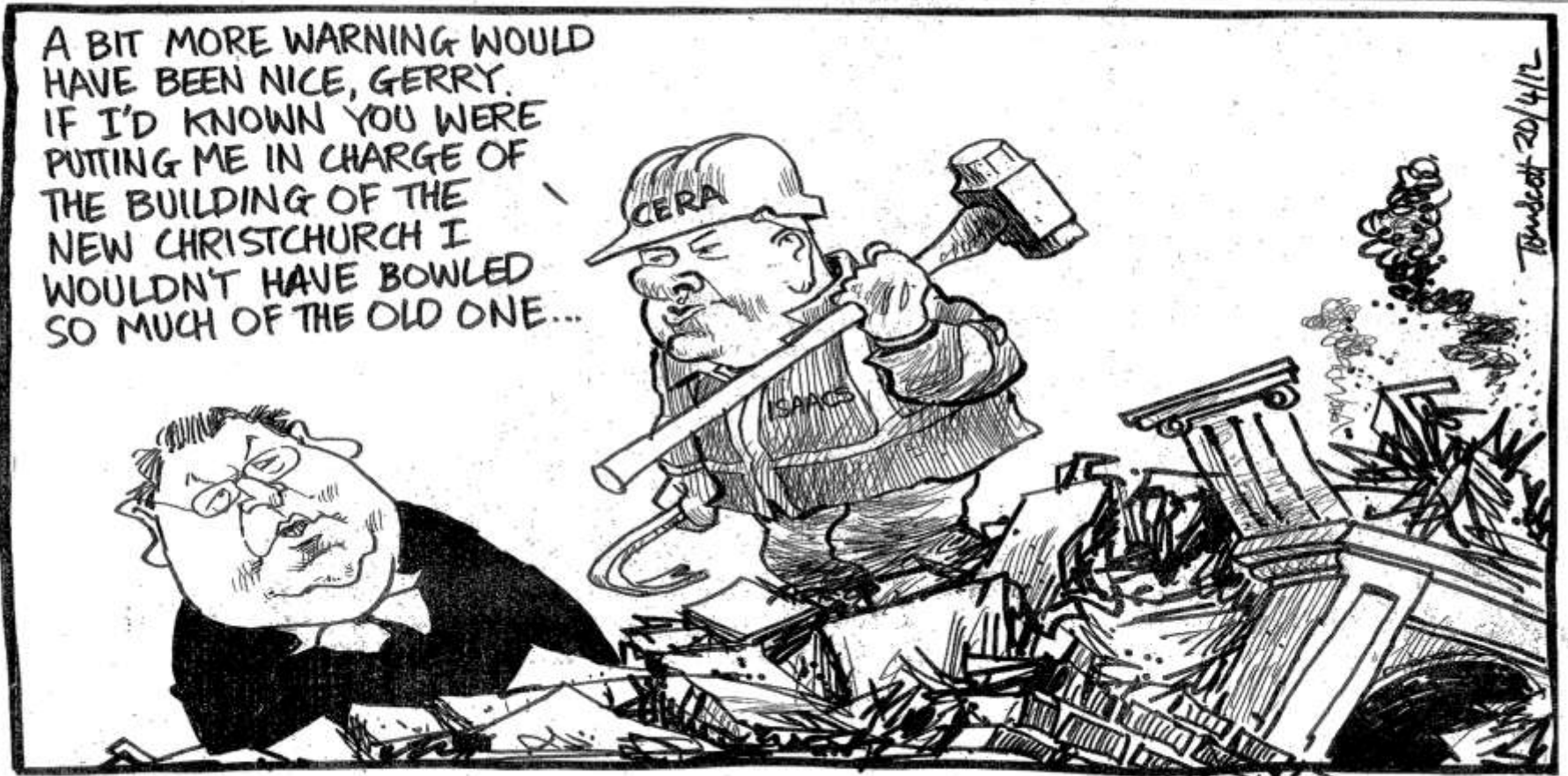


Final CCC draft Central City Plan (Dec 2011) – “commuter rail” receives greater emphasis



**Christchurch Central**  
Development Unit

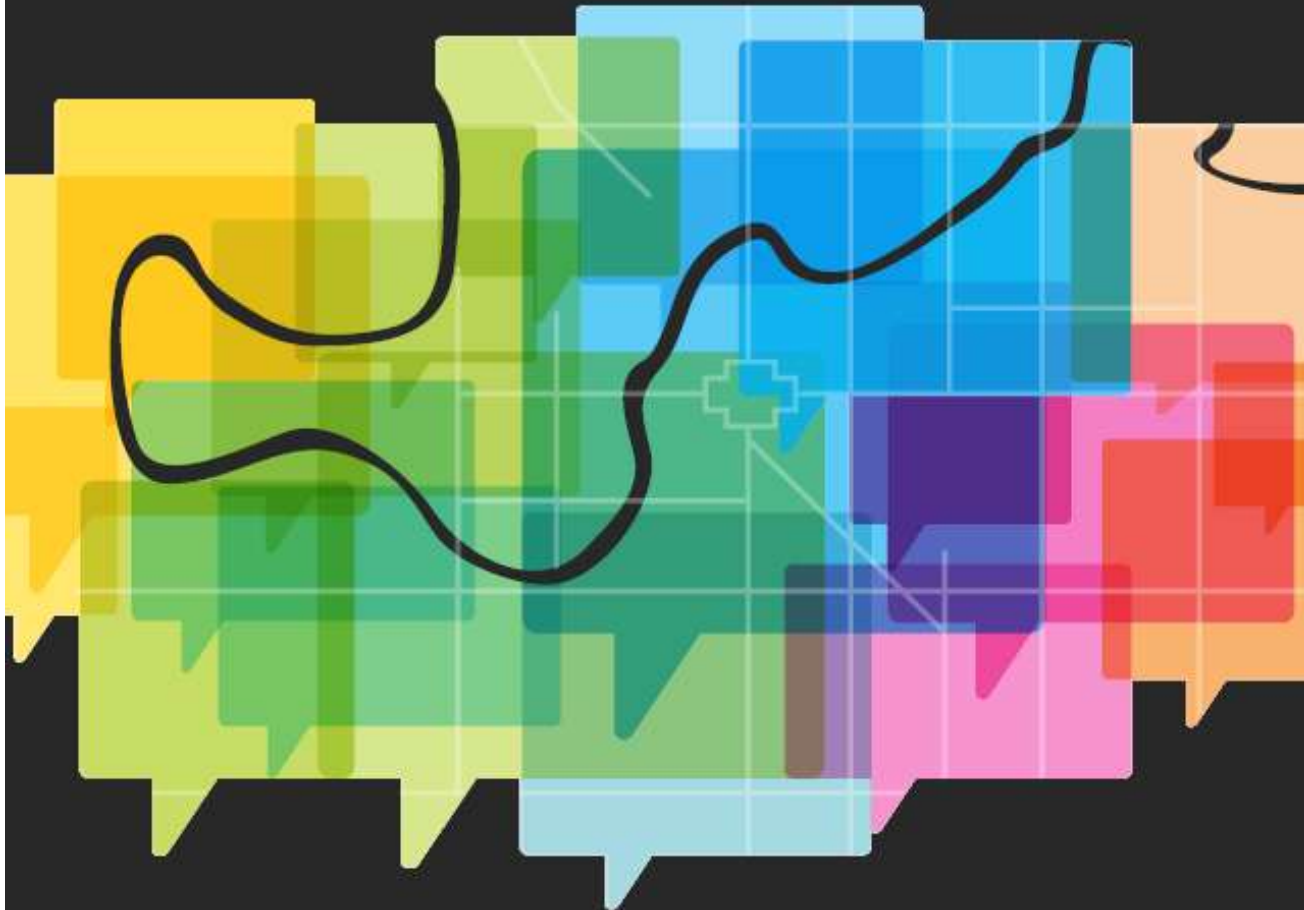
CCDU established March 2012



Tom Scott's take on Warwick Isaacs being appointed by Minister Brownlee to lead CCDU!

# Christchurch Central Recovery Plan

Te Mahere 'Maraka Otautahi'



# Key elements of the plan

- “Green frame” to limit retail spread
- Recognition of surviving activities/landmarks (e.g. Museum, Arts Centre, Art Gallery, CCC offices, Ballantynes shop, CPIT, the Square)
- Location of “anchor projects” - new sites
  - retail precinct
  - convention centre
  - stadium
  - metro sports facility
  - public library
  - bus interchange
  - performing arts precinct
  - justice and emergency services precinct
  - health precinct
  - “innovation” precinct
  - Avon river precinct
  - Ngai Tahu cultural precinct
  - temporary cathedral



Christchurch Central Recovery Plan 36

- Compulsory powers to acquire land and changes to planning rules
- NO reference to tram



## Purpose and Significance of the Frame

### Te Kaupapa o Te Taparepare

#### The Frame

- Redefines the central city
- Provides an attractive location for a range of commercial and residential activities
- Articulates the community vision for a green, distinctive, vibrant and accessible city
- Will support a greater choice of housing to attract a diverse range of residents
- Adds visual and open space amenity
- Reduces the need for District Plan rules to control development within the Core which would otherwise be required to address the phasing of development
- Gets people back into the city to enjoy the amenity of the Frame (walking, cycling and playing)
- Provides an alternative cycling and walking network linking the Ōtākaro/Avon River and Hagley Park
- Provides an attractive campus-style environment for businesses

#### Implementation

**Project lead:**  
CERA

**Partners:**  
CCC, ECan, NZTA, Te  
Rananga o Ngāi Tahu, the  
philanthropic sector and the  
private sector

**Indicative design start date:**  
2012





Getting ready: Ferryvale volunteers Frank Gidley, left, and Gordon Edworthy are helping with repairs to the city's tour tram.

PHOTO: KIM WOODS/STAFF PHOTOGRAPHER

## Tram restart plan off the grid for now

Sam Sachdeva  
sam.sachdeva@pressonline.co.nz

Work to restart Christchurch's historic trams will be put on hold until city councillors can get more information on the service.

The council's draft annual plan, which is being debated by councillors, had proposed that council staff use their "best endeavours" to get the trams back in operation by December.

Mayor Bob Parker had recommended that the council include \$3.7 million of funding to extend the tram route.

Councillors yesterday voted 5-3 to hold off on any funding until they received a report from staff with more information on the tram's operations and development.

Cr Yoni Jctanson, who proposed the delay, said it was unwise to push ahead with the tram-track extension, given the number of unknowns on the future of the central city.

"I don't think it's prudent to spend money now without

knowing what the city centre will look like."

He said the central-city blueprint being prepared by the Government-led Christchurch Central Development Unit could have a significant impact on the viability of the tram route.

Jctanson told *The Press* he did not want to stop the trams from resuming by December but believed councillors needed to "get all the facts on the table" before they made a decision.

Parker said the tram extension had already been "substantially built" and was unlikely to be affected by other CHU plans.

Approving the project would send a signal about the central city's recovery, he said.

During the first day of deliberations, councillors also cut proposed fee rises for swimming coaching programmes.

Councillors voted to provide free access to "high-acharver" swimmers who were placed in the top three at national championships.

CTL keen to get started but CCC wants more info. about "operation and development of the tram"



Box car 11

marooned in The town shed





Leaving the red zone – 24 May 2012

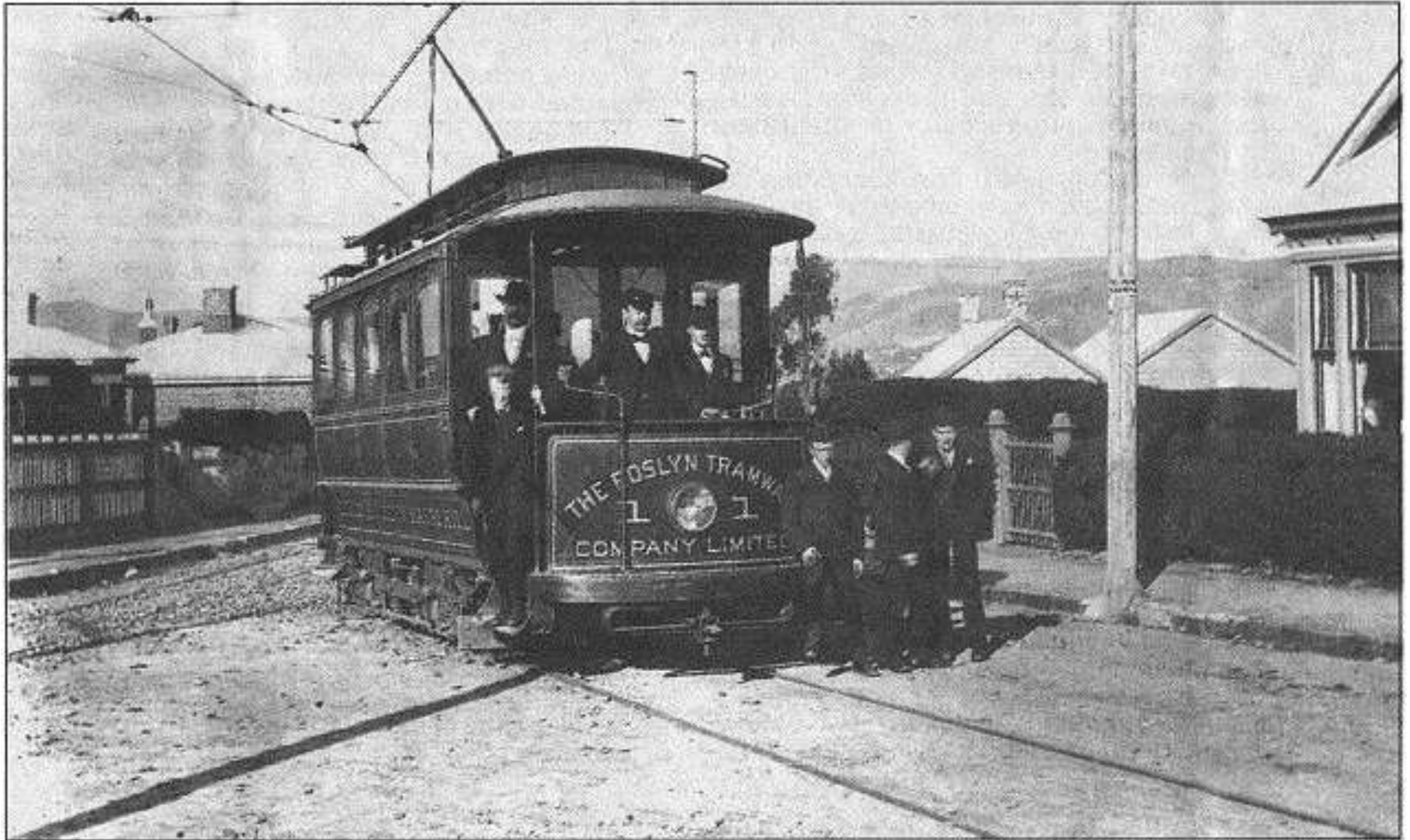


No. 11 returns to Ferrymead and renovation begins

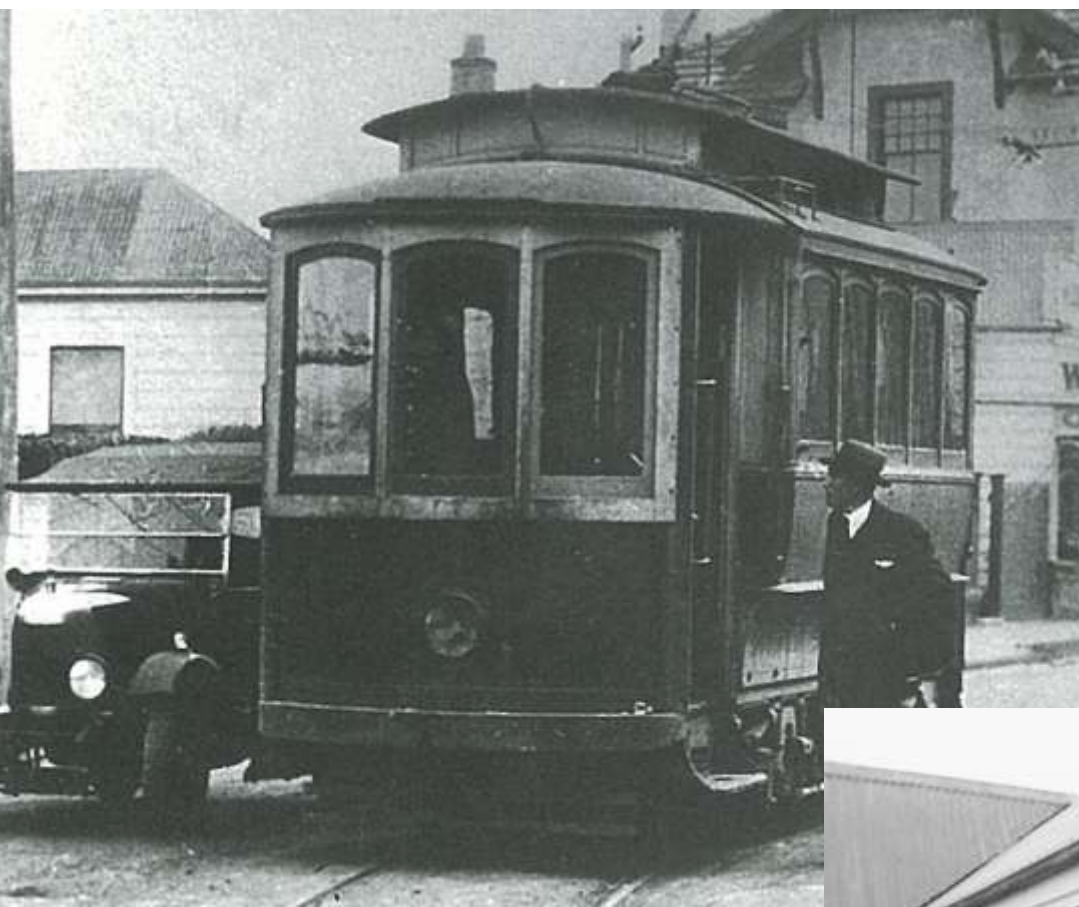
And back at Ferrymead in 2012.....

- HTT survives by having contract with OSM to restore Roslyn tram No. 1
- Birney 15 progress slows because funding had dried up – now close to being finished
- On completion of Roslyn 1 HTT able to start repair work on city trams (No. 11)
- Brill 185, sourced as a future additional tram for town, arrives at Ferrymead - one year late because of earthquakes
- Additional funds raised allowing concreting of floor of TB 3 to begin.

# Heritage Tramways Trust Restoration Project



A task undertaken for Otago Settlers Museum (July 2011-May 2012) 27



Tram No. 1 in latter day operation –  
Scrapped in 1936, and then  
as a crib at Ocean View from 1936





Arrival at Ferrymead –  
and the transformation begins!



Almost completed



Off to Dunedin - 16 May 2012



New home at O.S.M. 17 May 2012



No wheels yet – but one day...

# Birney 15 Progress



## CONSERVATION PLAN



INVERCARGILL BIRNEY SAFETY CAR NUMBER 15

*(Draft 10 - 2 December 2009)*



First trial runs – 28 October 2011



Finishing touches – windows and doors, May 2012

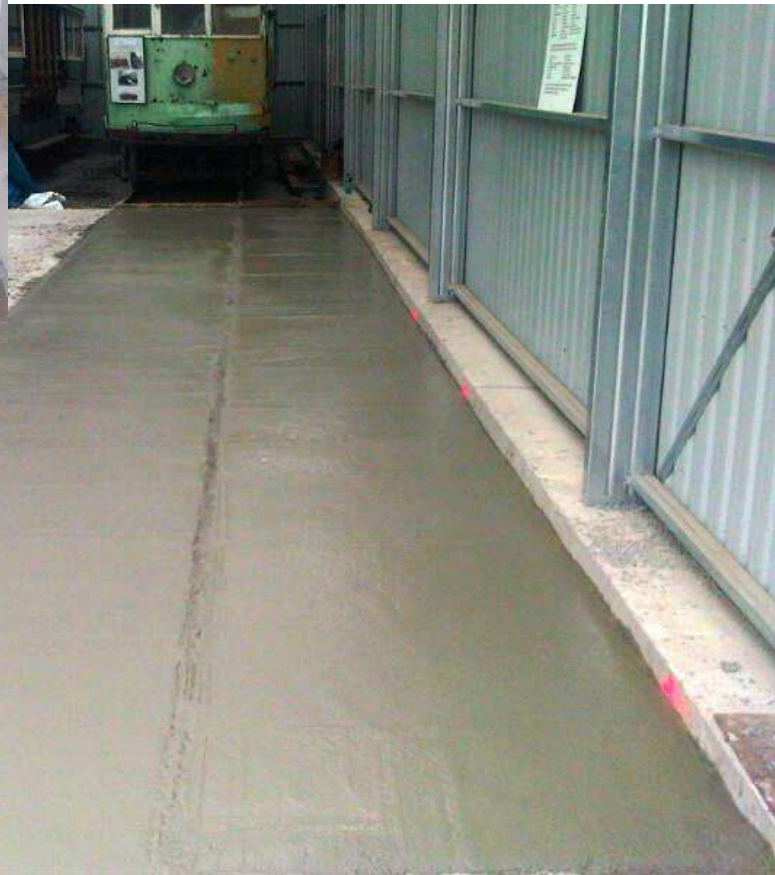


Doors fitted – July 2012

# The TB 3 fundraising continues



Note: July 2012 - \$100K now exceeded, with more to come – for concrete floor, power, fire sprinklers and intruder alarms!



Concrete floor under way  
– July 2012

# Acquisition of second Brill tram



Brill 185, 1952 – Destination” Shed”



And so it came to pass... June 2012



There is a tram inside!



Brill 185 is “destination SHED” - a.k.a. “Tram Barn 4”

# Postscript 1 : the Valley Inn - the pub with no beer



Tues 7 Sept 2010

# Postscript 2 : the Valley Inn - the beer with no pub !



Sat 11 Sept 2010

# Postscript 3: new Valley Inn - the pub and the beer!



September 2011



THE END